

# COMPLIANCE KIOSK

Compliance, Fleet Health, Event Collection



The WatchGas Compliance Kiosk works as a terminal to allow the user to check in the gas detector providing a full overview of the device status and any unforeseen events. The WatchGas compliance Kiosk automatically sends all data to a designated software site. This provides a cost effective overview of fleet health, predictive maintenance, events and alarms.

Furthermore, the WatchGas Compliance Kiosk provides the capability to actively manage the detector settings and user assignments.

## FEATURES AND BENEFITS



### CONFIGURATION VERIFICATION

The Compliance Kiosk has the capability to check the gas detector settings such as function setting, alarm limits, and assigned User ID against a system reference file set up by the system administrator.

Allowing the system to validate that the unit is set up correctly and a calibration bump test has been performed for the company's safety process.



### HEALTH CHECK

The Compliance Kiosk reads the product's health and reports it to the RTR Solution Compliance Watch, providing a unique preventive maintenance schedule and reducing downtime.

The data includes battery status, sensor status, hardware, and firmware status.



### CONNECTIVITY

The Compliance Kiosk offers a wide range of connectivity options. It can be set up as a standalone system, where information can be sent via email to a printer, laptop, or phone. If you want the system to be connected, you can connect directly to a WI-FI network, or the device can be fitted with a Sim card to connect to a cellular network. This makes sending reports and data super easy.



### ACTION CONFIRMATION

The Compliance Kiosk will alert the user if their detector needs any form of attention such as predictive maintenance, bump, or calibration. The system can verify if a User ID has been assigned to a gas detector and allow updates to be made that will automatically load onto that detector.



### EVENT COLLECTION

The Compliance Kiosk will automatically download the event log from a gas detector, store it locally, and send it to the RTR Solution if activated (software sold separately), providing a quick and simple overview for management.



### MOUNTING OPTIONS

We understand that different applications require equipment to be located in a variety of environments. The Compliance Kiosk comes with brackets that allow it to be tailored for wall mounting or desktop use.

# COMPLIANCE KOISK

Compliance, Fleet Health, Event Collection



## COMPLIANCE KIOSK AND RTR SOLUTION

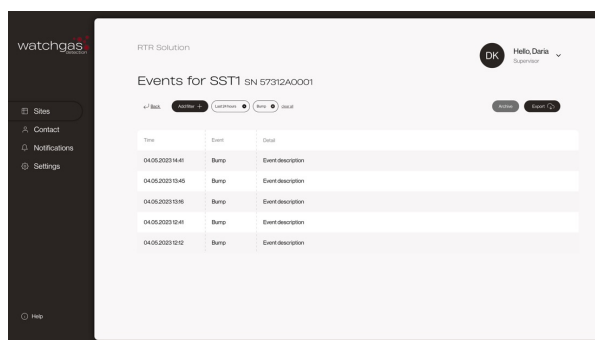
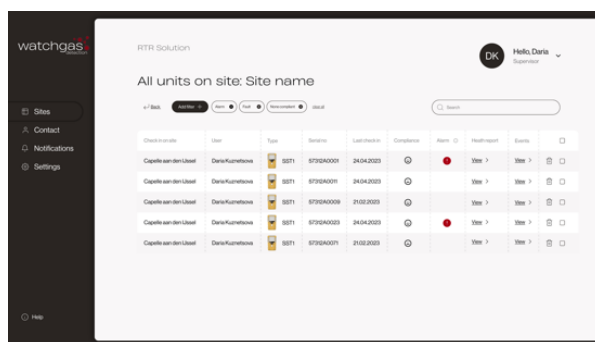
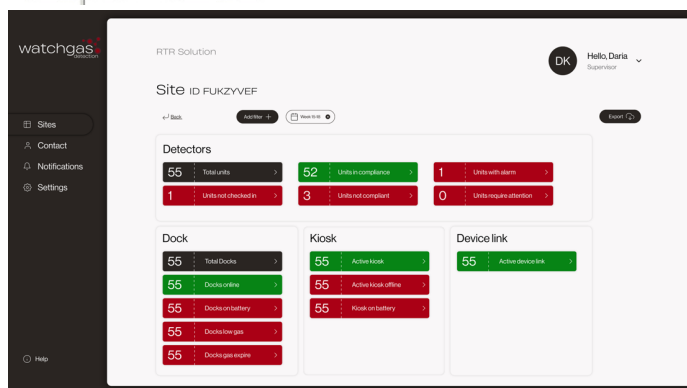
The Compliance Kiosk is designed to carry out compliance checks of your gas detection fleet or can be used by a service provider with a large customer base to maintain. The kiosk is compatible with the SST1, SST4 (all models), and the SST5. This means one kiosk can read your entire fleet and reduce your infrastructure costs. It allows users to facilitate regular check-ins without costly calibration or bump stations, to handle simple tasks such as detector location, compliance and if an alarm event has occurred.

What does a safety manager want to know:

- Do the monitors work and are they being used?
- Did we have any alarms on-site?
- Are we following the company's safety procedures?
- What is the status of my fleet?
- Will I have unforeseen expenses?



Compliance Kiosk pushes data to RTR solution



## COMPLIANCE KIOSK SPECIFICATIONS

Dimensions (LxWxH)	28 x 21 x 4 cm (11 x 8.25 x 1.5 in)
Weight	800 g (1.76 lb)
Temperature	+5-40 °C (40-104° F)
Humidity	10% to 90% RH
Storage Temperature	0-50 °C (32-122° F)
Power Supply	USB C 5V
Real Time Clock	Yes, updateable
Data Storage	More than 1 year of operation
Connection capability	Wi-Fi, Cellular, BLE – Connected into the RTR COMPLIANCE WATCH
Testing Function	Device status
Device Compatibility	One module compatible with SST Range
Certifications & Approvals	EMC Directive 2014/30/EU Low Voltage Directive 2014/35/EU FCC Part 15 RoHS Directive 2011/65/EU RED 2014/53/EU
Warranty	2 years



Distributed by